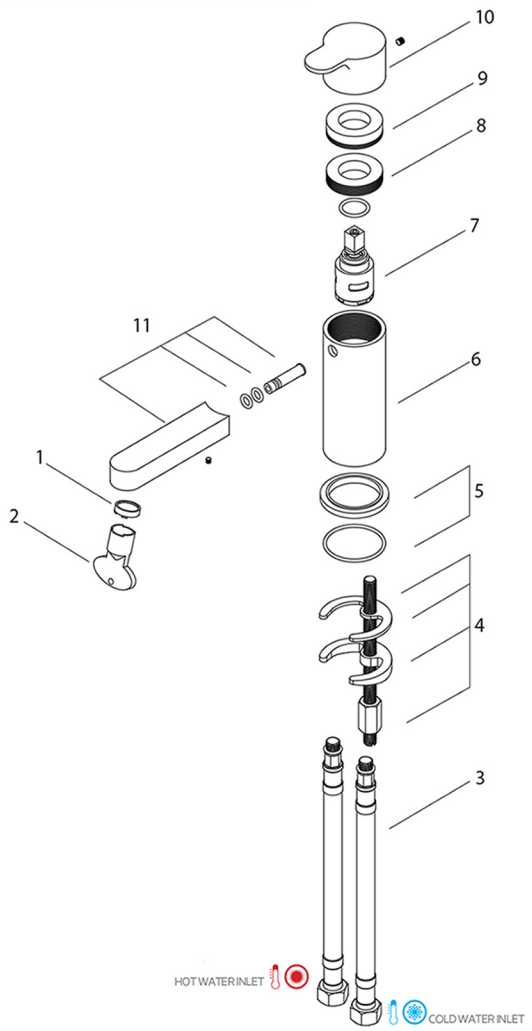


Купчик'Купчик' / Parts Diagram

Note: Item Fully Assembled

FOR ASSEMBLY FOLLOW THE INDICATIONS OF THE DRAWING



TECHNICAL DATA

Nº	REFERENCE	DESCRIPTION
01	AR9.18	AERATOR
02	—	KEY AERATOR
03	—	CONNECTION FLEXIBLE
04	—	FIXING KIT
05	ES9.45B	PLATE
06	—	TAP BODY
07	CR9.25L	CARTRIDGE
08	—	LOCKNUT
09	—	CARTRIDGE CONCEALER
10	MA9.41B	HANDLE
11	—	SPOUT


INSTALLATION RECOMENDATIONS

Before installing a tap, it is good to rinse the supply pipes to remove all residues. We also recommend installing the taps with a filter. The installation of the tap must be done with the surface clean and dry. to perform the water pressure test, the taps must be open.

CLEANING AND MAINTENANCE

Cleaning must be done with liquid soap and water. Do not use liquid detergents containing abrasive or acidic substances, abrasive sponges or disinfectants. Incorrect cleaning may permanently ruin the surface of taps.

On color finishings, do not use products containing alcohol, acetone and other solvents.

Collection Clip	Model Clip T9.10	Dimensions Metric <i>1 inch = 2.54 cm</i> <i>1 inch = 25.4 mm</i>	 1051 Lea Drive - Collegeville, PA 19426 Tel. 215 513 9400 - Fax 610 831 0215 www.ws bathcollections.com - info@ws bathcollectins.com
--------------------	-----------------------	---	---