

Unlimited 46

Features

- Bathroom Sink
- Available in 2 Finishes: Glossy White and Matte Black
- Wall Mount or Countertop (Vessel) Installation
- Available with One, Three, or No Faucet Hole
- Three Faucet Hole Option is Available in 4" or 8" Spread
- Available with Soap Dispenser Hole Option to the Left or Right of Faucet Hole
- With Overflow
- Made in Italy



Related Items:

- WSBC 53991 | Push Waste Drain
- WSBC 53922 | Decorative Trap

Finishes

-  Glossy White
-  Matte Black

SKU# | Options


- Unlimited 46.00 | No Faucet Hole
- Unlimited 46.01 | Single Faucet Hole
- Unlimited 46.03-4 | Three Faucet Holes 4" Spread
- Unlimited 46.03-8 | Three Faucet Holes 8" Spread
- Unlimited 46.02L | Left Soap Dispenser Hole (Specify Distance)
- Unlimited 46.02R | Right Soap Dispenser Hole (Specify Distance)
- Unlimited 46.nn WG | Glossy White
- Unlimited 46.nn BM | Matte Black

“.nn” refers to the number of faucets holes

Codes & Standards:

- ADA Compliant

* WS Bath Collections reserves the right to revise dimensions or information on this sheet without notice

Collection Unlimited	Model Unlimited 46	Dimensions Metric <i>1 inch = 2.54 cm</i> <i>1 inch = 25.4 mm</i>	 1051 Lea Drive - Collegeville, PA 19426 Tel. 215 513 9400 - Fax 610 831 0215 www.ws bathcollections.com - info@ws bathcollectins.com
--------------------------------	--------------------------------	---	---

collezione
collection

Unlimited 46

cod.UNL01

Lavabo
wash basin

Dimensioni / dimensions

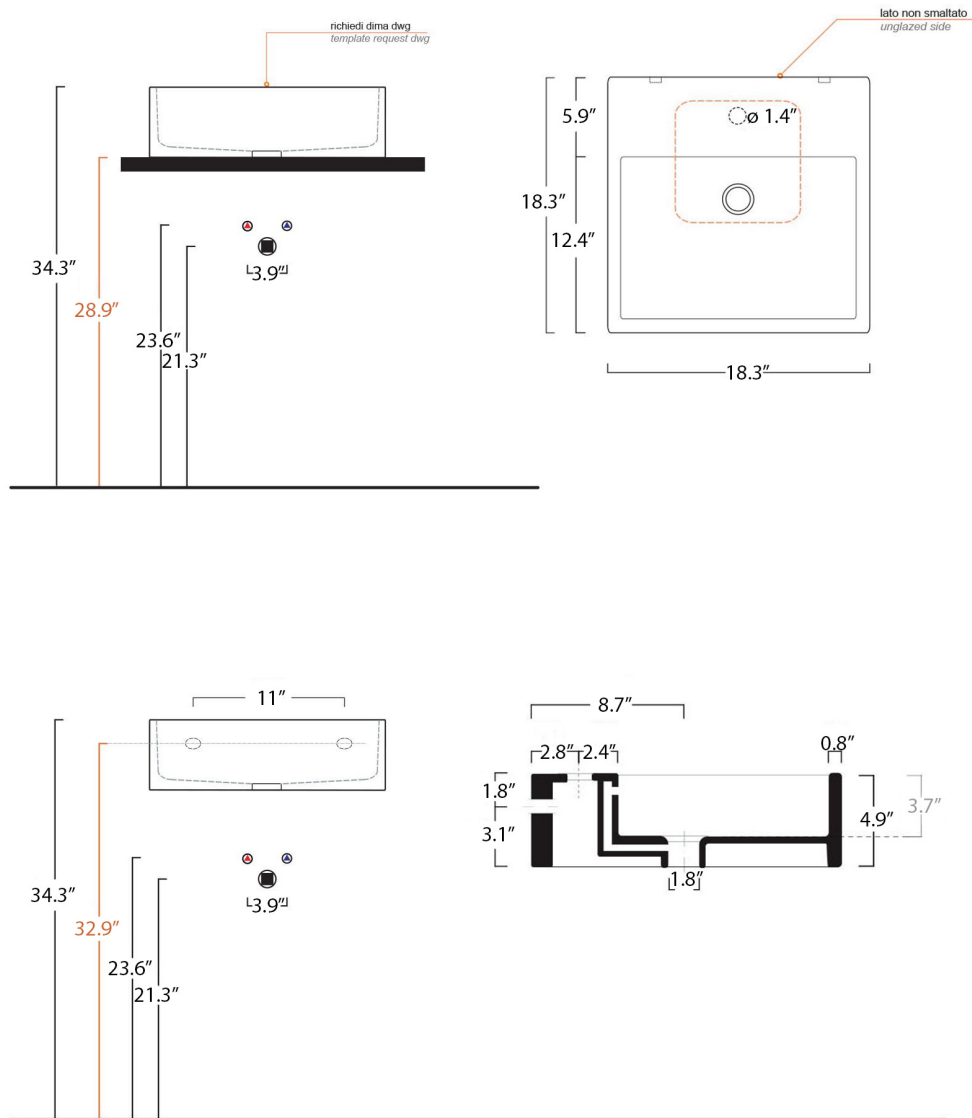
L 465 - P 465 - H 125

Troppo pieno / over flow : Si / Yes CL15

Peso netto / net weight :31 LBS

Appoggio / sit-on

Sospeso / wall-hung



Collection
Wprko kgf

Model |
Wprko kgf '68

Dimensions Metric

1 inch = 2.54 cm
1 inch = 25.4 mm

WS[®]
BATH
COLLECTIONS

1051 Lea Drive - Collegeville, PA 19426
Tel. 215 513 9400 - Fax 610 831 0215

www.ws bathcollections.com - info@ws bathcollections.com

We recommend the following items that work with your sink.

TRAPS



WSBC 53922
Our best seller



WSBC 5392



WSBC 53925



WSBC 53921
Space saving

DRAINS



WSBC 53991
Push waste drain (click clack)
with overflow

MOUNTING HARDWARE

Wall-mount installation

Vessel/ countertop installation



Bolts



Silicone (*optional*)

Collection
Wprko kgf

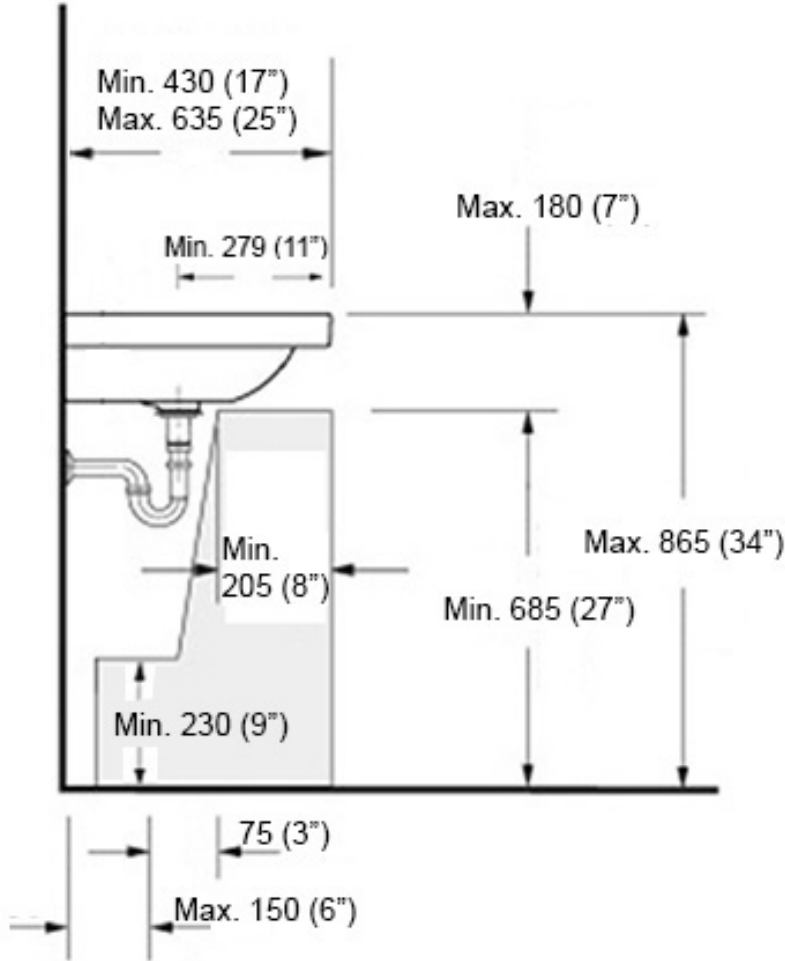
Model |
Wprko kgf '68

Dimensions Metric
1 inch = 2.54 cm
1 inch = 25.4 mm


WS[®]
BATH
COLLECTIONS

1051 Lea Drive - Collegeville, PA 19426
Tel. 215 513 9400 - Fax 610 831 0215
www.ws bathcollections.com - info@ws bathcollections.com

Recommended ADA Installation



Note: ADA Compliant when installed in accordance with ADA guidelines

<p>Collection Unlimited</p>	<p>Model Unlimited 46</p>	<p>Dimensions Metric 1 inch = 2.54 cm 1 inch = 25.4 mm</p>	 <p>1051 Lea Drive - Collegeville, PA 19426 Tel. 215 513 9400 - Fax 610 831 0215 www.wsbatchcollections.com - info@wsbatchcollectins.com</p>
--	--	--	---