

Palma COL01

Features

- Bathroom Column
- Wall-hung design offers a clean, streamlined look
- Soft closing door
- Four-tier shelf (includes two glass shelves)
- Fully assembled
- Structure and front made of engineered wood in wood finishes and high gloss lacquered
- Hidden hanging bracket directly assembled with great resistance and depth regulations
- Handle integrated in front of furniture
- Reversible Opening (Can be Installed with a Left or Right Hinge)
- Made in Spain



SKU# | Options:

- Palma COL01 WG | Matte White
- Palma COL01 NO | Natural Oak

Finishes:

-  Matte White
-  Natural Oak

Codes & Standards:

- CARB2 Compliant and Certified
- TSCA Compliant and Certified

* WS Bath Collections reserve the right to make revisions without notice to product specifications, dimensions, or information.

Collection |
Palma

Model |
Palma COL01

Dimensions Metric

1 inch = 2.54 cm

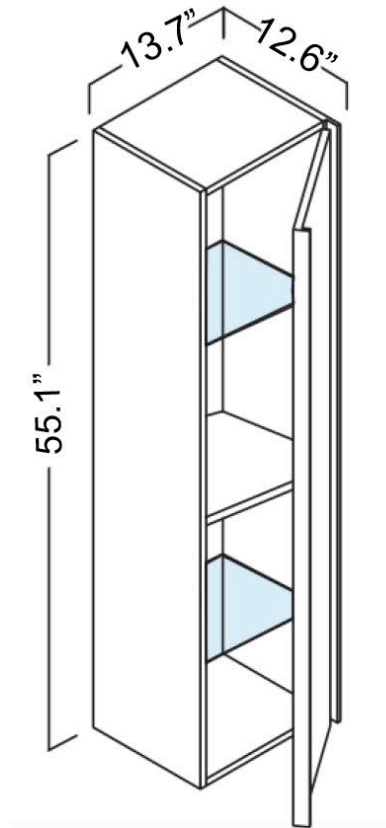
1 inch = 25.4 mm

WS®
BATH
COLLECTIONS

1051 Lea Drive - Collegeville, PA 19426
Tel. 215 513 9400 - Fax 610 831 0215

www.ws bathcollections.com - info@ws bathcollections.com

Palma COL01



Technical information



Soft close



Glass shelf



Reversible rotating door

Collection |
Palma

Model |
Palma COL01

Dimensions Metric
1 inch = 2.54 cm
1 inch = 25.4 mm

WS[®]
BATH
COLLECTIONS

1051 Lea Drive - Collegeville, PA 19426
Tel. 215 513 9400 - Fax 610 831 0215

www.ws bathcollections.com - info@ws bathcollections.com